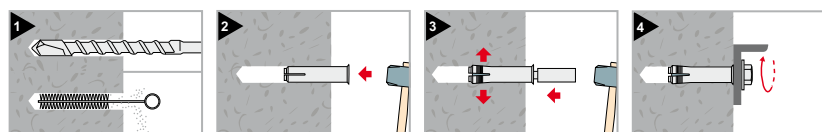
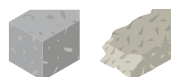


TAP

Rimmed hammerset anchor

Cheville à frapper avec collerette



CERTIFICATIONS CERTIFICATIONS

Non-cracked concrete

Béton non fissuré

Multiple use for non-structural applications on cracked and non-cracked concrete

Utilisation multiple pour des applications non structurale sur béton fissuré et non fissuré

Fire resistance R120

Résistance au feu R120



Code	Plug Cheville Ø x L	Thread Filetage	Pkg.	Outerbox Cond.
75205b06000 ⁽²⁾	8x25	M6	100	2000
75205b08000 ⁽¹⁾⁽²⁾	10x30	M8	100	1000
75205b10030 ⁽²⁾	12x30	M10	100	600
75205b10000 ⁽¹⁾⁽²⁾	12x40	M10	100	600
75205b12000 ⁽¹⁾⁽²⁾	15x50	M12	50	300
75205b16000 ⁽¹⁾	20x65	M16	25	150

White zinc plated

Zingué blanc



Code	Plug Cheville Ø x L	Thread Filetage	Pkg.	Outerbox Cond.
75203b06000	8x25	M6	100	2000
75203b08000	10x30	M8	100	1000
75203b10000	12x40	M10	100	600
75203b12000	15x50	M12	50	300
75203b16000	20x65	M16	25	150

White zinc plated

Zingué blanc

Codes not covered by CE certification / Codes non certifiés CE



Stainless steel A2

Inox A2



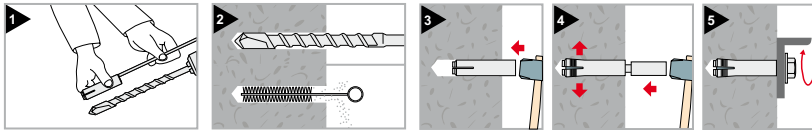
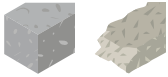
Code	Plug Cheville Ø x L	Thread Filetage	Pkg.	Outerbox Cond.
75204006000	8x25	M6	100	2000
75204008000	10x30	M8	100	1000
75204010000	12x40	M10	100	600
75204012000	15x50	M12	50	300
75204016000	20x65	M16	25	150

Codes not covered by CE certification / Codes non certifiés CE

TAP

Hammerset anchor

Cheville à frapper



Rimless plug white zinc plated

Cheville sans collerette
zingué blanc

Code	Plug Cheville Ø x L	Thread Filetage	Pkg.	Outerbox Cond.
75200b06000	8x25	M6	100	2000
75200b08000	10x30	M8	100	1000
75200b10000	12x40	M10	100	600
75200b12000	15x50	M12	50	300
75200b16000	20x65	M16	25	150

Codes not covered by CE certification / Codes non certifiés CE

TAP

Setting tool

Outil de pose



Code	Setting tool Outil de pose	Pkg.
49902b06000	for / pour M6	1
49902b08000	for / pour M8	1
49902b10000	for / pour M10	1
49902b12000	for / pour M12	1
49902b16000	for / pour M16	1